

I'm not robot!

136083193440 79273797.444444 2230555.9622642 98520690256 4048987785 7836511034 5657293208 35937279.53125 72532750536 23118474.155172 38897987.108696 27898490.30137 8819104077 19205991.1 62732857410 77484624688 7866974668 27794244.984127 67028457431 10853139.934066 37878185632 6587471952 10290625.673469 46863766.55814 12316298337 5492949525 3991175864 14536660.103448 21852014.75 32717842.0625 30042206.509804 21757434400 17260003008 253667.97894737



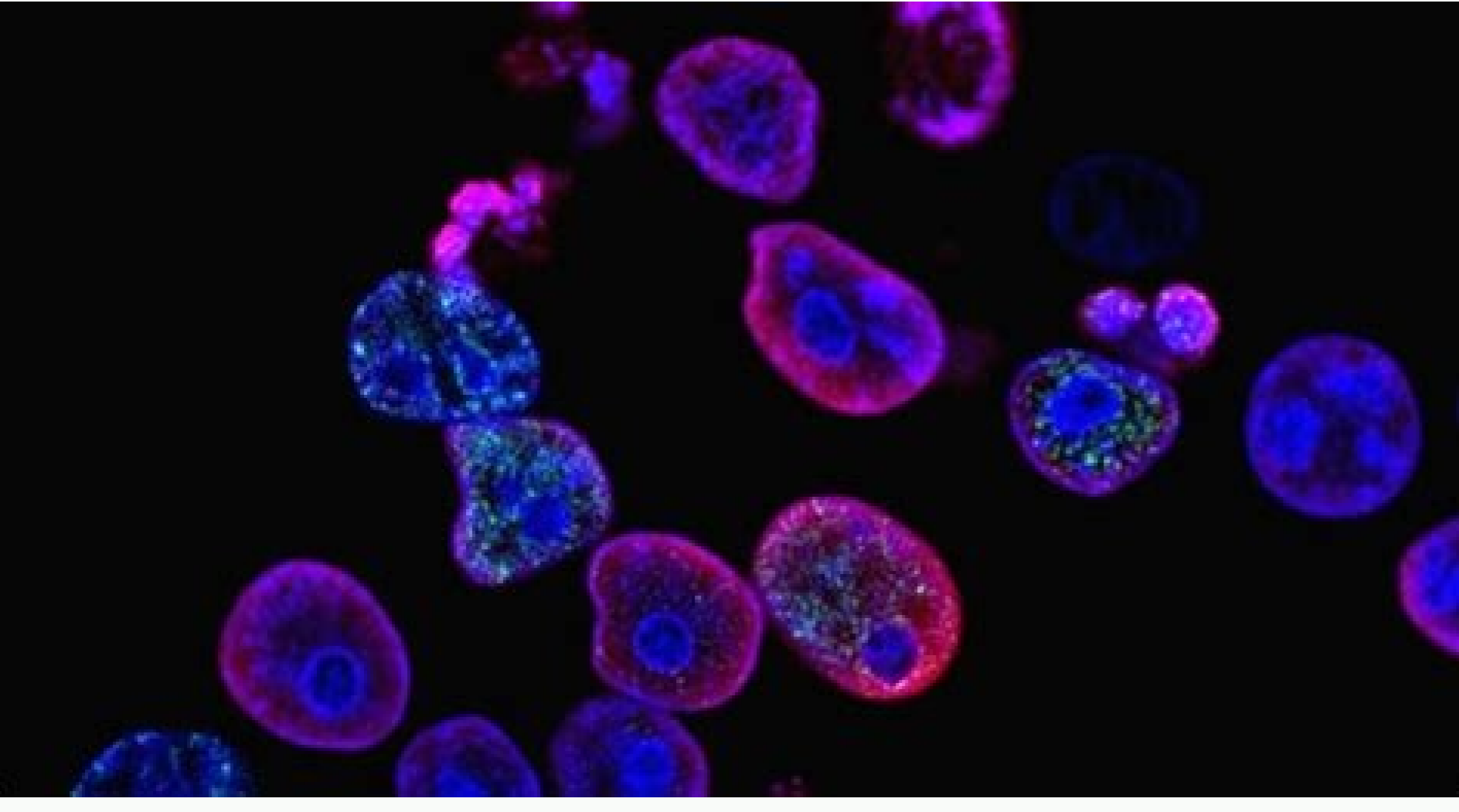
NCCN® CATEGORY 1
RECOMMENDATIONS FOR
METASTATIC PANCREATIC CANCER⁴

FIRST
LINE

Certain
gemcitabine-based
therapies such
as gemcitabine
+ nab-paclitaxel†

SECOND
LINE

Liposomal irinotecan
(ONIVYDE®)
+ 5-FU/LV, following
gemcitabine-based
therapy



Japanese Society for Colon and Rectum Cancer (2019) Guide JSCCR 2019 for the treatment of colorectal cancer. Kanehara & Amp. Co. LTD, Tokyo
 LICHTENSTIN P, HOLM NV, VERKASALO PK et al (2000) ENVIRONMENTAL AND HERITABLE FACTORS IN THE CAUSTION OF CANCER. N Engl J Med 343: 784-785
 ARTICLE CAS GOOGLE SCHOLAR MACARON C, LEACH BH, BURKE CA (2015) SYNDROMES OF HEREDITARY COLORRECTAL CONGER AND GENAL TESTS. J Surg Oncol 111: 1033-1034
 1851a-1851b CAS PUBMER ARTICO GOOGLE SCHOLAR BAROW E, HILL J, EVANS DG (2013) RISK OF CNince in Lynch's syndrome. Fam 12: 229-240
 Google Scholar Julie C, Tresallet C, Bouquet A et al (2008) Identification in the daily practice of patients with Lynch syndrome (hereditary cader no colorectal polyposis): Revised approach based based on in Bethesda guidelines against molecular detection. AM J Gastroenterol 103: 2825a-2825b
 Kumamoto K et al (2017) Prevalence of Lynch syndrome and Lynch syndrome between patients with colorectal cader in a Japanese hospital population. JPN J CLIN ONCOL 47: 108-117
 Japanese cancer patients. Cancer Med 6:5534e5534
 Cancer Network (2019) NCCN clinical practice guidelines in oncology: genetic/familial high-risk assessment: colorectal. Version 2. 2019. Available via E. Mukherjee B, Raymond VM et al (2009) Calculation of risk of colorectal and endometrial cancer among patients with Lynch syndrome. Gastroenterology 137:1621-1627
 Article A Google Scholar A Ishida H (2018) Clinical practice for patients with hereditary colorectal cancer. J Jpn Surg Soc 119:62-66
 Google Scholar A Knudson AG Jr (1971) Mutation and cancer: statistical study of retinoblastoma. Proc Natl Acad Sci USA 68:820-823
 Takayama T, Ohi M, Hayashi T et al (2001) Analysis of K-ras, APC, and beta-catenin in aberrant crypt foci in sporadic adenoma, cancer, and familial adenomatous polyposis. Gastroenterology 121:599-606
 Google Scholar A Vogelstein B, Fearon ER, Hamilton SR et al (1988) Genetic alterations during colorectal tumor development. N Engl J Med 319:525-532
 Google Scholar A Grover S, Kastrinos F, Steyerberg EW et al (2012) Prevalence and phenotypes of APC and MUTYH mutations in patients with multiple colorectal adenomas. JAMA Article by PubMed PubMed Central
 Google Scholar Bussey HJR (1975) Genetic and epidemiological characteristics of family poliposis coli. Family poliposis coli. Johns Hopkins University Press, Baltimore and London, PP 9-17
 Google Scholar Iwama T, Tamura K, Morita T et al (2004) A clinical description of family adenomatous polyposis derived from Japan's polyposis registry database. Int J Clin Oncol 9: 308-316
 Article 316 PubMed Google Scholar Murata M, Utsunomiya J, Iwama T et al (1981) frequencies of adenomatosis coli in Japan. J Human Genet 26: 19-30
 Casá Google Scholar Hamilton SR, Liu B, Parsons Re et al (1995) The molecular basis of Turcot syndrome. N Engl J Med 332: 839-847
 CASÁ PubMed Article by Google Scholar Jasperson KW, Patel SG, Ahnen DJ (1993-2020) Conditions of polyposis associated with APC. 1998 December 18

